

2018 Mercedes Benz E63S AMG 4MATIC Sed (213.089) V8-4.0L Turbo (177.980)

Vehicle > Technical Service Bulletins

HEIGHT ADJUSTMENT OF ELECTRIC STEERING COLUMN ADJUSTMENT NONFUNCTIONAL



Mercedes-Benz

- Height adjustment of electric steering column adjustment nonfunctional -

Topic number	LI46.15-P-064685
Version	5
Function group	46.15 Steering column adjustment
Date	02-23-2018
Validity	Model 190 up to vehicle production 31.03.2017 Model 205 up to vehicle production 31.03.2017 Model 213 up to vehicle production 31.03.2017 Model 217 up to vehicle production 31.03.2017 Model 222 up to vehicle production 31.03.2017 Model 231 up to vehicle production 31.03.2017 Model 238 up to vehicle production 31.03.2017 Model 253 up to vehicle production 31.03.2017 Model 463 up to vehicle production 31.03.2017
Reason for change	Validity period added

Complaint

Height adjustment of electric steering column adjustment inoperative.

Cause

Flexible shaft on gearing of height adjustment broken or dislocated.

File

Complaint.mp3

Designation

Video of problem

Remedy

Replace gearing of height adjustment (adjustment repair kit).

Procedure:

1. Remove footwell trim on driver side.
2. Determine variant of height-adjustment and order appropriate replacement part (refer to attachment).

Version A: A 231 460 02 31

Version B: A 213 460 70 00

3. Remove steering column.
4. Remove height adjustment (adjustment repair kit).
5. Install repair kit (adjustment repair kit) (observe tightening torque for bolts in attachment).
6. Install steering column.

File

Nm.pdf

Designation

Bolt tightening torque, adjustment repair kit

Symptoms

Symptom

Chassis/suspension / Steering system / Steering column adjustment / Nonfunctional

Chassis/suspension / Steering system / Steering column adjustment / Does not adjust in height

Chassis/suspension / Steering system / Steering column adjustment / Clattering

Chassis/suspension / Steering system / Steering column adjustment / Adjusts without obvious cause

Chassis/suspension / Steering system / Steering column adjustment / Knocks

Parts

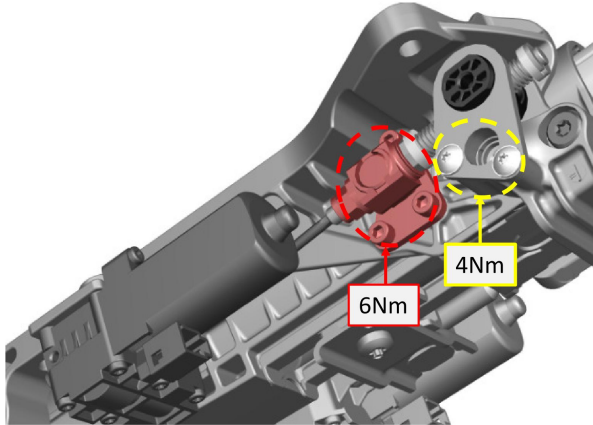
Part number	ES1	ES2	Designation	Quantity	Note	EPC
A2134607000			Adjustment repair kit	1	Repair kit for height adjustment of electric steering column/version: B	
A2314600231			Adjustment repair kit	1	Repair kit for height adjustment of electric steering column/version: A	

Operation numbers/damage codes

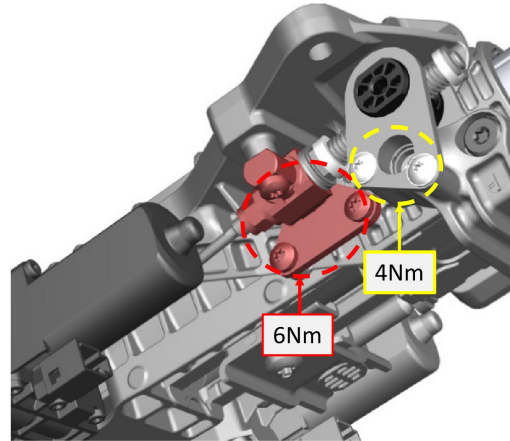
Op. no.	Operation text	Time	Damage code	Note
			4628136	Gearing of steering column adjustment - Noise

LI46.15-P-064685_2

Version A



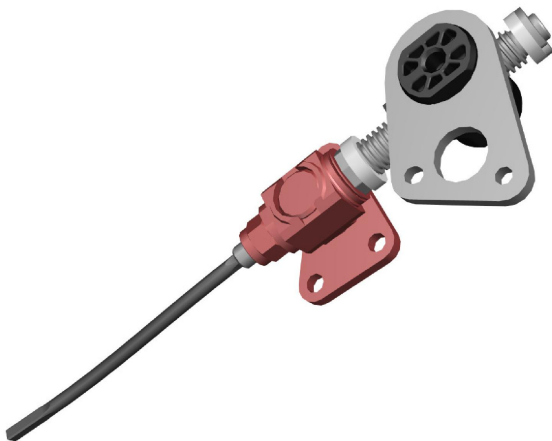
Version B



LI46.15-P-064685_3

Version A

A2314600231



Version B

A2134607000

